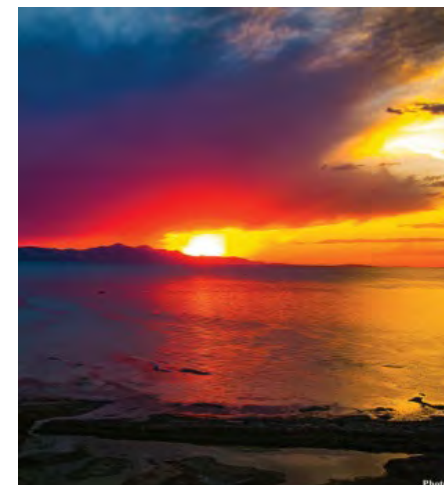




GREATER SALT LAKE  
**Municipal Services  
District**



# HISTORY AND OVERVIEW

## 2024

# HISTORY

## Greater Salt Lake Municipal Services District (MSD)

---

### Unincorporated-area problems

- Shrinking tax base from incorporations and annexations
- Community identity suffering through loss of land area
- No community border protection
- No local control

### “Community Preservation” proposal

- Conceptualized by County Mayor Ben McAdams
- Consultation and refinement with elected officials and community leaders
- Legislation authorizing metro townships, the MSD and an election



G R E A T E R   S A L T   L A K E  
**Municipal Services  
District**

# HISTORY Page 2

## Greater Salt Lake Municipal Services District (MSD)

---

County council created the MSD on  
September 15, 2015

Independent “special district” under Utah Law



G R E A T E R   S A L T   L A K E

**Municipal Services  
District**

### Purpose

The MSD provides municipal services to  
its member communities

- To unincorporated areas in 2015-16
- To municipalities and the unincorporated areas starting in January 2017
- Includes all municipal services formerly provided by Salt Lake County
  - This did not affect county-wide services

The MSD does not provide police, fire or  
sanitation services

# HISTORY Page 3

## Greater Salt Lake Municipal Services District (MSD)

---

### November 2015 General Election

#### **Voters in Copperton, Emigration Canyon, Kearns, Magna, Millcreek and White City voted whether to:**

- Become metro townships served by the MSD, or
- Become cities

#### **Voters in unincorporated islands voted whether to:**

- Annex to adjacent city, or
- Remain unincorporated

#### **Voter information and engagement**

- Salt Lake County council and mayor held 30+ town halls and public hearings in 2015
- Information mailed to every voter

#### **2015 Election Result**

- Millcreek voters chose to become a city and withdrew from the MSD in July 2017
- Copperton, Emigration Canyon, Kearns, Magna and White City voters chose to become a metro township
- Most unincorporated island voters rejected annexation

**The Town of Brighton incorporated in January 2020 as an MSD member**



GREATER SALT LAKE  
**Municipal Services  
District**

# HISTORY Page 4

## Greater Salt Lake Municipal Services District (MSD)

---

### House Bill 35

- In February 2024, the Utah Legislature passed H.B. 35 and Governor Cox signed the bill into law. The bill converts the four Metro Townships (Kearns, Magna, White City and Emigration Canyon) into Cities and one Metro Township into a Town (Copperton) **on May 1, 2024.**
- As a Metro Township, the townships have always had the same obligations as other cities and have always met the needs of their residents, including providing all fire, police and safety needs.
- H.B. 35 will not change the services Magna residents receive. The Greater Salt Lake Municipal Services District will continue to provide city services to its members. Our member communities have contracted with Unified Police Department and Unified Fire Department to provide policing and fire services to their residents.
- H.B. 35 was supported by all the Metro Townships: *Copperton, Emigration Canyon, Kearns, Magna, and White City.*

### H.B. 35 makes two other changes:

- 1) The voters of each community – rather than City Council members - will directly elect the Mayor. The current Mayors stay in office until the next municipal election in the fall of 2025, when residents will vote for a Mayor.
- 2) The cities and towns will have the authority to impose a municipal property tax. Previously, townships could only impose property taxes through the special districts that provide municipal services to its residents. This change will ensure that these cities/towns are treated the same as other municipalities by giving it the same tools and flexibility as other municipalities to use to fund the services it provides as efficiently as possible.



G R E A T E R   S A L T   L A K E  
**Municipal Services  
District**

# HISTORY Page 4

## Greater Salt Lake Municipal Services District (MSD)

---

### MSD is governed by a Board of Trustees

- The county council served as the board in 2015-16
- Five mayors and two council members now comprise the board
- Board voting and quorum determination are weighted by population
- Board sets policy and adopts the budget
- General manager reports to the board and directs district operations

### The MSD initially contracted with the county for all municipal services

- MSD assumed Planning and Development, Finances and Human Resources in 2019
- MSD now contracts with the county, nonprofit, and other services



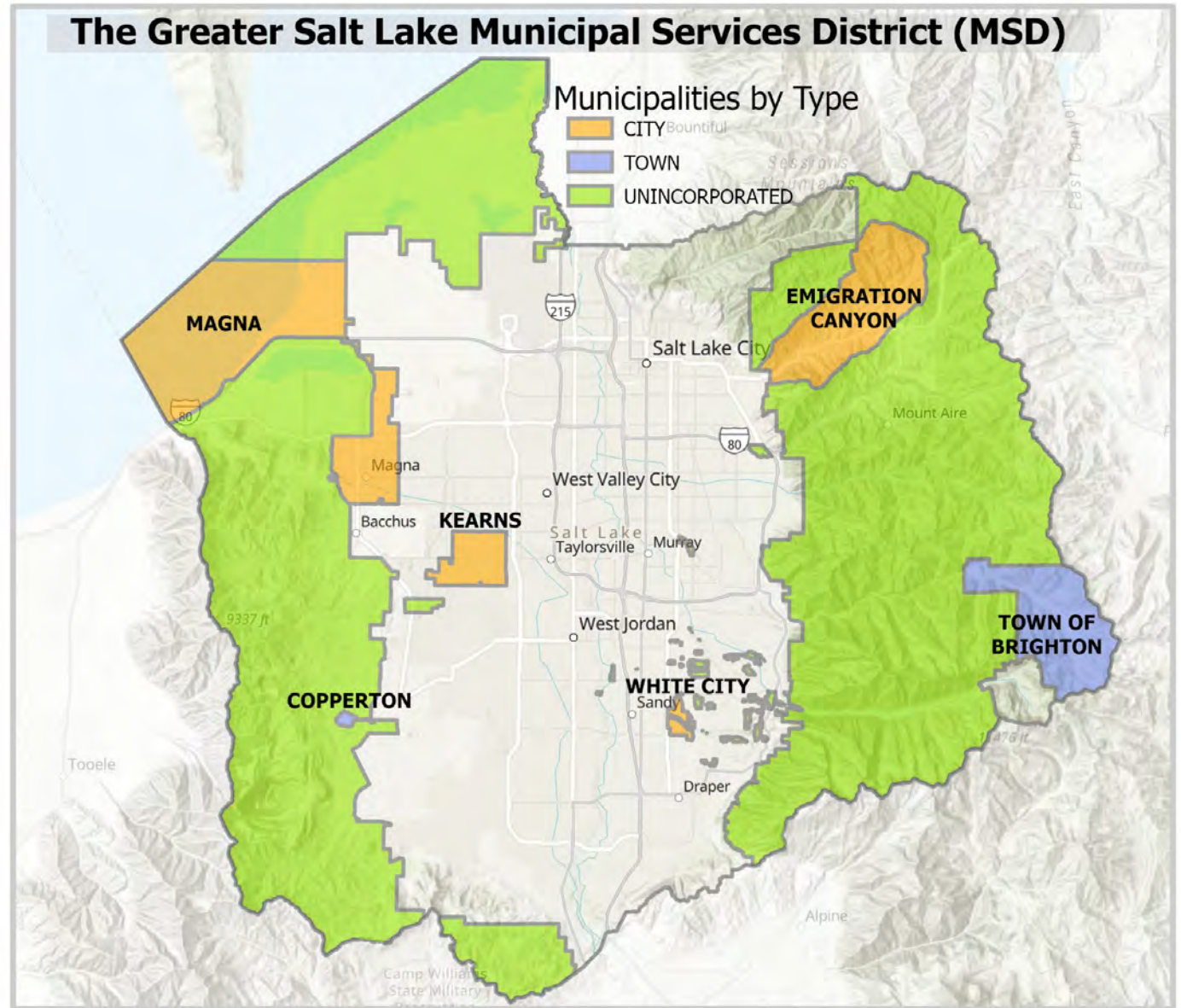
G R E A T E R   S A L T   L A K E  
**Municipal Services**  
**District**



# MSD Municipalities and Unincorporated Areas



G R E A T E R   S A L T   L A K E  
**Municipal Services  
District**



# Southeast Area:

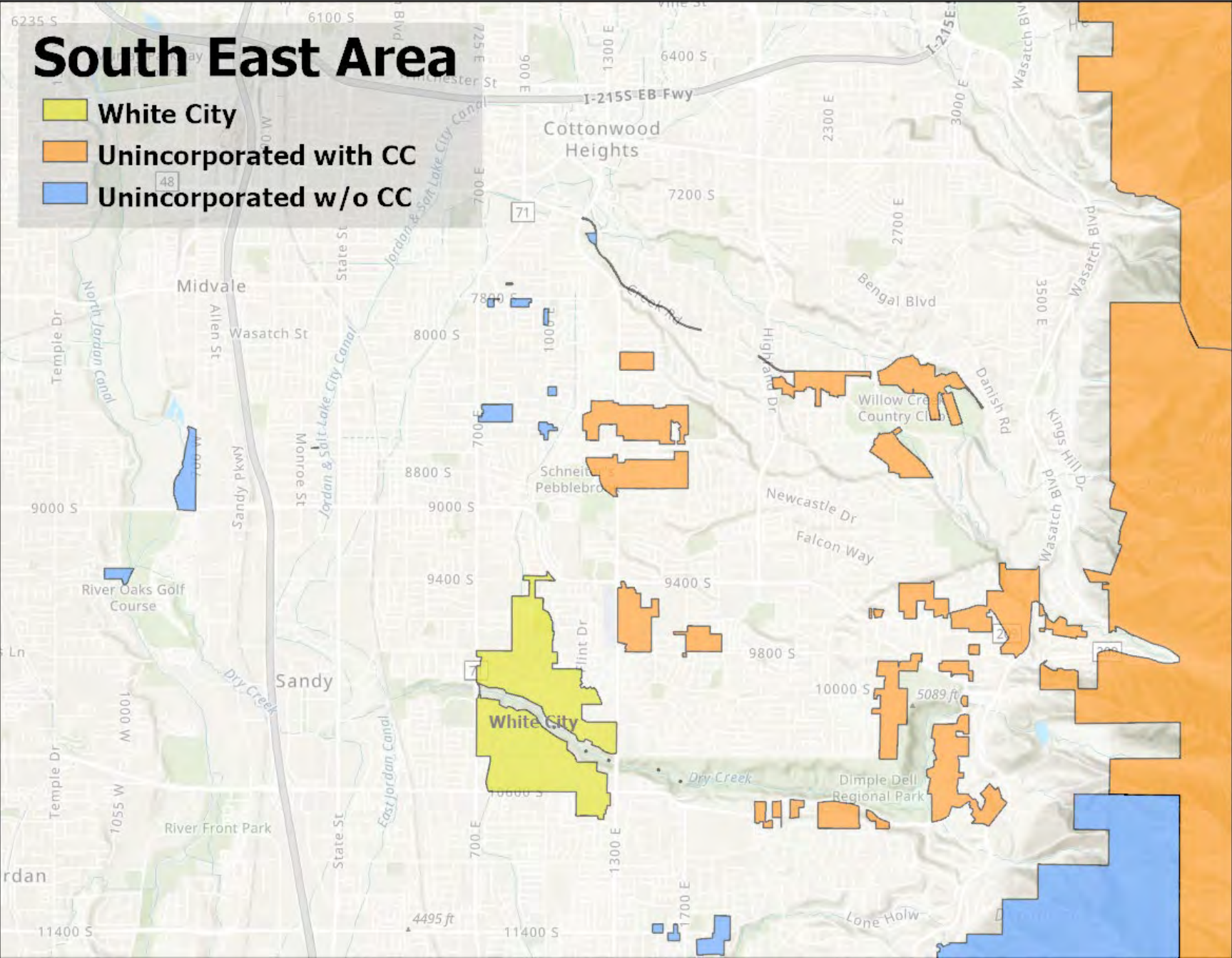
White City Metro  
Township

Unincorporated  
Areas With  
Community Councils

Unincorporated  
Areas Without  
Councils



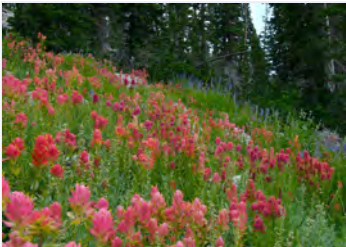






GREATER SALT LAKE  
**Municipal Services  
District**








# MSD Population 2024: 86,036\*

## Member Entities:

Town of Brighton	Copperton	Emigration Canyon	Kearns	Magna	White City	SL County Unincorporated Area
441	840	1,484	37,249	29,668	5,598	10,756
						

# Unincorporated Area Population 2024: 10,756

## Community Councils:

Big Cottonwood Canyon Community Council	Granite Community Council	Sandy Hills Community Council	Willow Canyon Community Council	Willow Creek Community Council
				

G R E A T E R   S A L T   L A K E

# Municipal Services District

# MSD Governance

## Board of Trustees



Keith Zuspan  
Brighton  
Council  
(Chair)



Sean Clayton  
Copperton  
Mayor  
(Vice-Chair)



Joe Smolka  
Emigration  
Canyon  
Mayor



Kelly Bush  
Kearns  
Mayor



Eric Barney  
Magna  
Mayor



Laurie  
Stringham  
County  
Council  
Member



Paulina Flint  
White City  
Mayor

G R E A T E R   S A L T   L A K E

## Municipal Services District

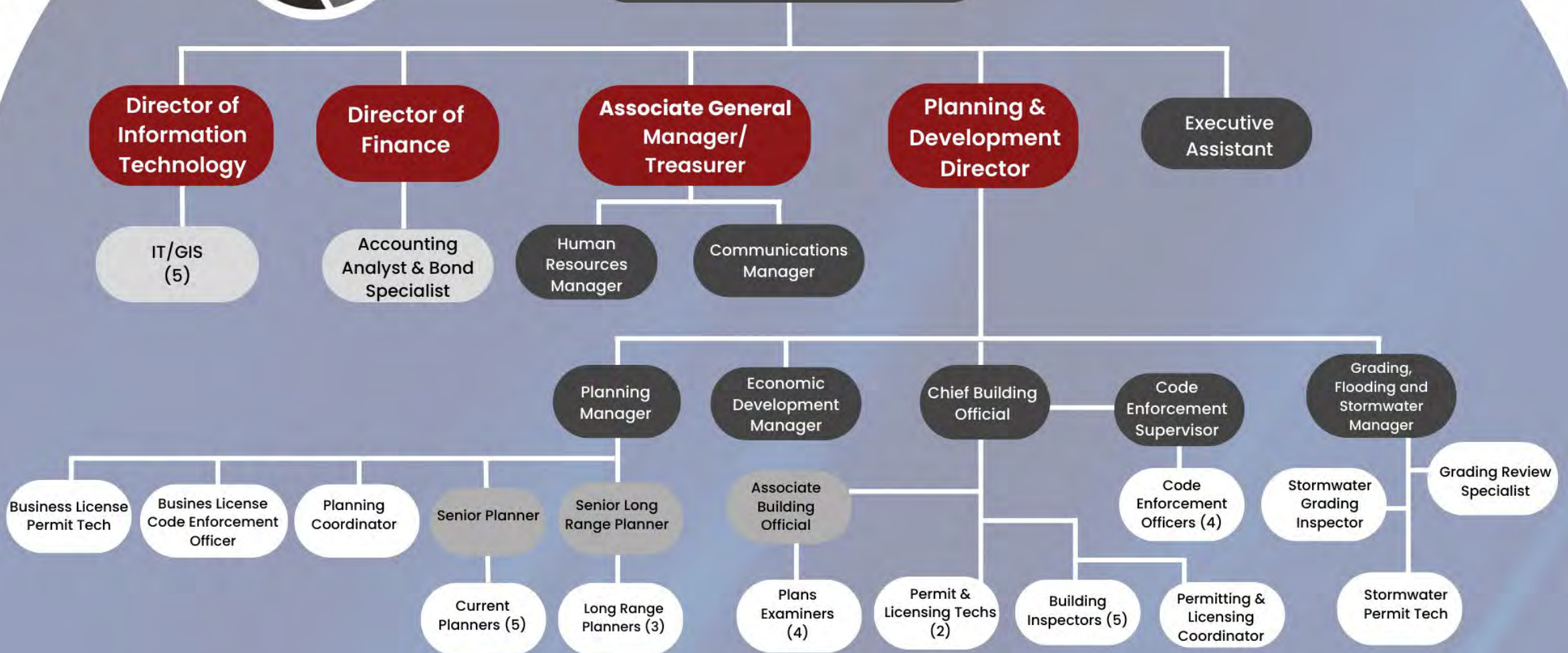






# MSD ORGANIZATIONAL STRUCTURE

## GENERAL MANAGER





# SERVICES PROVIDED BY THE MSD

---

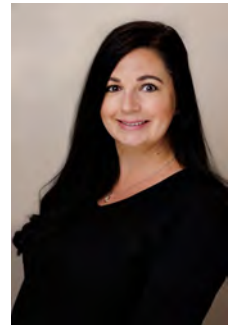
## Staffing & Administrative Support Provided Directly by the MSD

- Human Resources
- Finance and Budgeting
- Information Technology/GIS/Drones
- Communications
- Legal



G R E A T E R   S A L T   L A K E

**Municipal Services  
District**



# SERVICES PROVIDED BY THE MSD

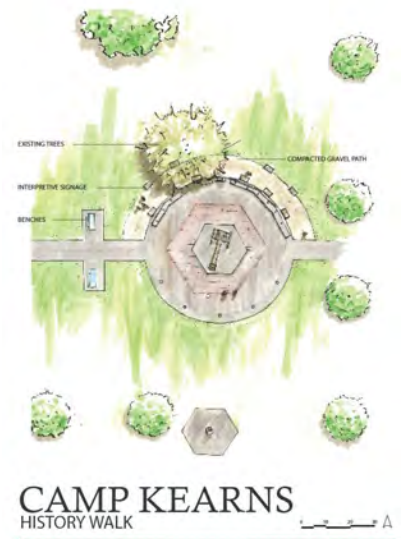
## 1. Planning and Zoning

- Addressing Data and Street-naming
- Building & Grading Permits and Inspections
  - Interpretation / Enforcement of Building Code
  - Plan review for building permits
  - Emergency inspections (earthquake, etc.)
- Land Use and Zoning
  - Plan review for land use applications
  - Subdivision review
  - Ordinance revisions



G R E A T E R   S A L T   L A K E  
**Municipal Services  
District**

- Current and Long Range Planning
  - General Plan compliance
  - Plan implementation
  - Community engagement
  - Special projects
  - Grant-writing
- Economic Development
- Floodplain Permits
- Stormwater Management Planning
  - SWPPP and Grading review and inspections
  - Protection of wetlands / aquatic ecosystems
  - Floodplain ordinances and permitting



# SERVICES PROVIDED BY THE MSD

---

## 2. Animal Control Services

Contracted with Salt Lake County Animal Services



- Adopt a Pet
- Lost and Found Animals
- Licensing
- Clinic Services



GREATER SALT LAKE  
**Municipal Services  
District**

## 3. Parks Maintenance and Operations

Contracted with Salt Lake County Parks

- Find a Park
- Reservations and Rentals
- Trails
- Open Space
- Park Maintenance and Mowing



# SERVICES PROVIDED BY THE MSD

---

## 4. Public Works – Construction and Maintenance of Rights-of-Way

Contracted with Salt Lake County Public Works

- Curb & Gutter
- Flood Control
- Pavement Management – Streets and Roads
  - Asphalt overlays, slurry seals, milling and chip seals
  - Pothole patching / crack seals
  - Road striping
- Sidewalks
- Street Signs and Striping
- Street Lighting
- Traffic Calming



- Traffic Signals and Safety Signals
- Snow Plowing, also snow shoveling near municipal facilities
- Roadway Engineering
- Noxious Weeds
- Transportation Engineering
- Excavation Permits
- Special Event Permits
- Storm Water Maintenance
  - Storm drainage facilities
  - Water quality
  - Street sweeping
  - Storm Drains



GREATER SALT LAKE  
**Municipal Services  
District**



# SERVICES PROVIDED BY THE MSD

---

## 5. Business Licensing

- Commercial and Home Businesses
- Short-Term Rentals (Town of Brighton)



Contracted to Salt Lake Legal Defenders Association

- Indigent Legal Defense

## 6. Code Enforcement

- Enforcement of land use codes, including weeds
- Parking enforcement (Brighton)
- Emergency support (earthquake, etc.)

The MSD does not provide police or fire protection or sanitation services.



GREATER SALT LAKE  
**Municipal Services  
District**

# 2024 MSD Adopted Budget All Funds



**Municipal Services  
District**

## GREATER SALT LAKE MUNICIPAL SERVICES DISTRICT

Proposed 2024 Budget

	Brighton	Copperton	Emigration Canyon	Kearns	Magna	White City	Unincorporated	Total Governmental Funds
<b>Expenditures:</b>								
<b>Administration</b>								
Wages	142,000	73,000	74,200	97,200	240,000	66,000		692,400
Employee Benefits	28,000	-		19,800	74,000	6,486		128,286
Social Security Tax	-	-	4,400	3,000		-		7,400
Medicare	-	-	1,000	1,500		-		2,500
Awards, Promotional & Meals	-		250	1,500	2,000	-		3,750
Subscriptions/Memberships	28,000	100	1,700	40,000	18,080	4,070		91,950
Printing/Publications/Advertising	3,000	500	2,000	5,500	8,000	5,000	-	24,000
Travel/Mileage	1,200	1,200	1,000	1,000	6,500		-	10,900
Office Expense and Supplies	2,000	200	1,000	5,000	10,000	1,070		19,270
Computer Equip/software	1,500	-	1,000	10,000	10,000	-		22,500
Cell Phone and Telephone	700	1,800	300					2,800
Attorney - Civil	48,000	40,000	40,000	150,000	80,000	75,000	93,500	526,500
Attorney - Land Use	15,000	-	10,000	50,000	30,000	10,000		115,000
Training and Seminars	2,000		1,000	2,500	15,000	7,070		27,570
Web Page Development/Maintenance	5,800	1,300	500	15,000	35,000	13,000		70,600
Software/Streaming	2,300	-	2,500	500	5,000	500		10,800
Internet connections	2,000	1,200		6,500				9,700
Payroll Processing Fees	2,000	900	500	-	1,100	900		5,400
Communications					10,000	4,000		14,000
Contributions/Special Events	32,000	4,200	8,000	90,000	172,000	38,000	20,000	364,200
Credit card and Bank Expenses						535		535
Insurance	5,500	8,200	18,500	43,000	26,000	16,000		117,200
Workers Comp Insurance	3,500	2,700	2,500	8,500	1,500	1,200		19,900
Postage	-	100	400	1,200	20,000	2,000		23,700
Professional and Technical	50,000	12,000	20,000	2,500	128,204	103,500	164,500	480,704
Contracted services	50,000							50,000
UFA Emergency Management	30,000	12,000	25,000	40,000	47,500	13,000	13,507	181,007
Recorder Services	3,850	20,000	25,000	55,000	100,000	65,000		268,850
Equipment/Computer Purchases	1,000	-			5,000		-	6,000
Non-Cap Improvements	-			10,000				10,000
Beer Funds	5,000	400	800	-	17,000			23,200
Code Enforcement Mitigation				100,000				100,000
Renewable Energy Costs				20,000				20,000
Justice Court Remediation						5,000		5,000
Rent	11,500	1,200	500	135,000	100,000	2,400		250,600
Non-Classified Expenses	-			5,000	5,000	5,000	320,000	335,000
Restroom Maintenance			12,000					12,000
Christmas on 54th Decorations & Lights				8,000				8,000
Magna 4th of July celebration					-			-
Victim Critical Needs				75,000				75,000
								-
<b>Total Administration</b>	<b>475,850</b>	<b>181,000</b>	<b>254,050</b>	<b>1,002,200</b>	<b>1,166,884</b>	<b>444,731</b>	<b>611,507</b>	<b>4,136,222</b>
% change from previous year	-0.27%	0.00%	4.29%	79.61%	25.11%	15.52%	7.57%	

790,315 Total Increase from last year  
23.6% % increase from last year



GREATER SALT LAKE  
**Municipal Services  
District**

# 2024 Budgeted Expenses

## MSD Member Entities

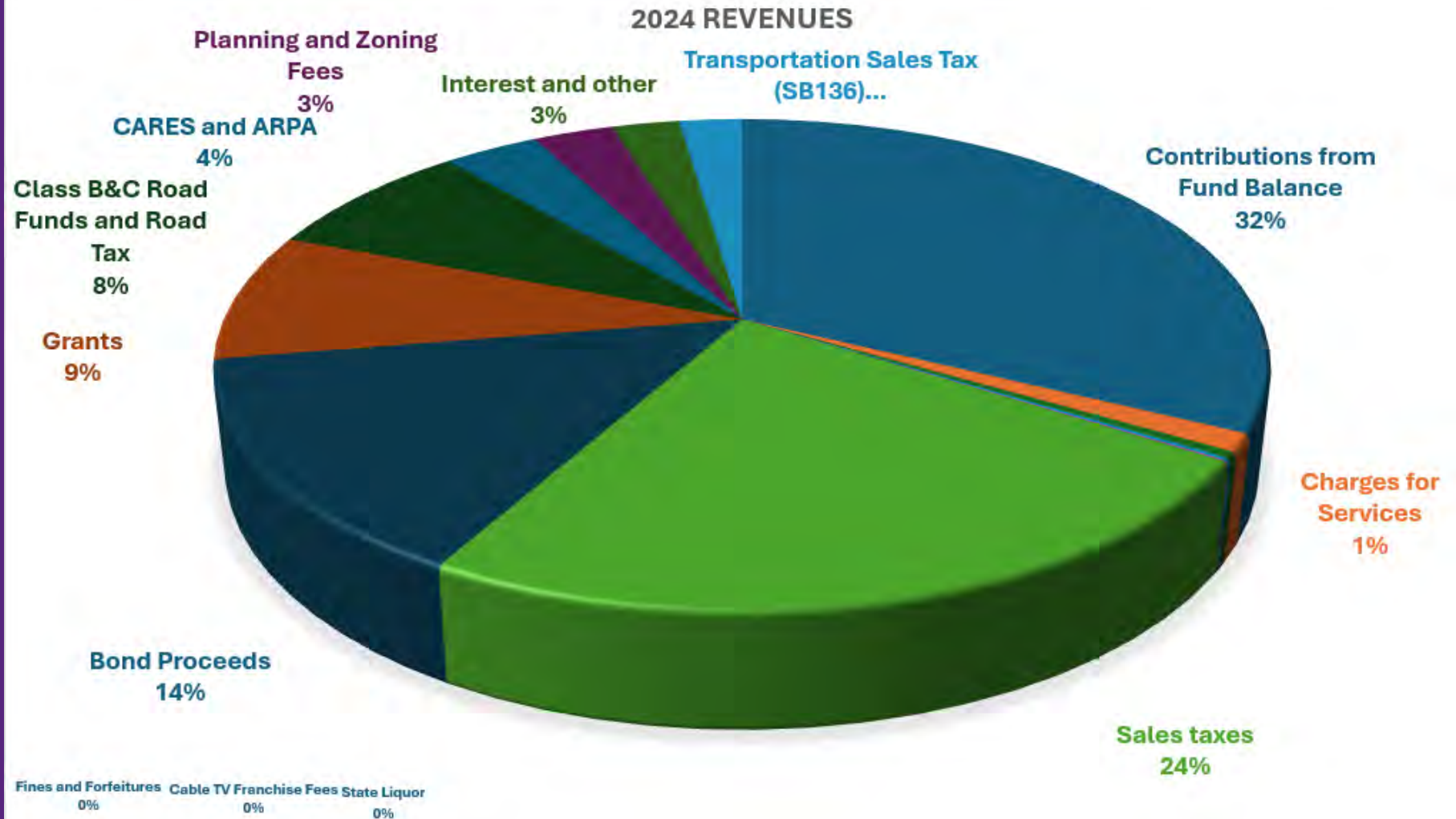


### Greater Salt Lake Municipal Services District Approved Budget For the Year Ending December 31, 2024

	MSD/ General Fund	Capital Impr	Brighton	Copperton	Copperton Cemetery	Emigration Canyon	Kearns	Kearns Beer Tax	Magna	Pleasant Green (Magna) Cemetery	Magna Communities that Care	White City	Unincorporated	Total
<b>REVENUES</b>														
Sales taxes			637,000	105,000		300,000	6,300,000		5,350,000	-		900,000	5,050,000	18,642,000
Cable TV Franchise Fees													100,000	100,000
Transportation Sales Tax (SB136)			63,000	10,000		30,000	600,000		500,000			85,000	500,000	1,788,000
Class B&C Road Funds and Road Tax			16,000	35,000		100,000	1,600,000		1,150,000			230,000	3,005,000	6,136,000
State Liquor			5,000			800		25,000			18,500	2,900		52,200
Planning and Zoning Fees			95,000	4,150		27,500	250,000		1,401,000	-		36,000	460,000	2,273,650
Charges for Services			28,000	700	7,000	7,000	20,000		550,000	40,000		26,000	220,000	898,700
Fines and Forfeitures			800	3,700		-	1,000		180,000	-		31,500	105,000	322,000
Interest and other	800,000	750,000	70,000	1,500	3,001	20,000	100,000		90,000	4,500		7,500	78,000	1,924,501
Grants		6,198,463							200,000		125,000			6,523,463
Grants paid directly to contractors		-												-
CARES and ARPA		2,445,100				248,519	-							2,693,619
Use of Restricted Funds		-												-
Contributions from Fund Balance (Encumbered)		11,029,183												11,029,183
Contributions from Fund Balance	7,749,689	18,744,190												26,493,879
	8,549,689	39,166,936	914,800	160,050	10,001	733,819	8,871,000	25,000	9,421,000	44,500	143,500	1,318,900	9,518,000	78,877,195
<b>EXPENSES</b>														
Administration	2,377,954		475,850	181,000	8,000	253,250	1,002,200		1,166,884	44,500	106,000	444,731	611,507	6,671,876
Animal Services	886,393													886,393
DA Prosecution	439,986													439,986
Indigent Legal	194,823													194,823
Justice Courts	1,857,374													1,857,374
Parks Maintenance	1,411,498													1,411,498
Public Works	11,532,418													11,532,418
Engineering	600,000	3,432,434												4,032,434
Engineering - Maintenance	3,900,000													3,900,000
Professional Services	523,500													523,500
Information Technology	258,000													258,000
Planning and Development	6,066,453													6,066,453
Non-classified	344,000													344,000
Building Fund		3,000,000												3,000,000
Debt repayment	2,204,751													2,204,751
Beer Funds						800		25,000						25,800
CARES and ARPA						248,519								248,519
Capital Projects New		2,277,638												2,277,638
Capital Projects Bond		5,284,685												5,284,685
Capital Projects (Carryover)		25,172,179												25,172,179
Contribution to Fund Balance					2,001									2,001
	32,597,149	39,166,936	475,850	181,000	10,001	502,569	1,002,200	25,000	1,166,884	44,500	106,000	444,731	611,507	76,334,327
<b>TRANSFERS</b>														
Transfers in	29,683,682	-	475,850	181,000		254,050	1,002,200		1,166,884	-	-	444,731	611,507	33,819,904
Transfers out	(5,636,222)		(914,800)	(160,050)		(485,300)	(8,871,000)		(8,415,632)			(1,318,900)	(9,518,000)	(35,319,904)
Transfers to Capital Projects		-		-		-	-		(1,005,368)			-	-	(1,005,368)
Transfer to Capital fund - Council Designated		-		-		-	-		-			-	-	-
Increase (Decrease) in Fund Balance											(37,500)			(37,500)
	24,047,460	-	(438,950)	20,950	-	(231,250)	(7,868,800)	-	(8,254,116)	-	(37,500)	(874,169)	(8,906,493)	(2,542,868)
<b>NET BUDGET</b>	<b>0</b>	<b>(0)</b>	<b>-</b>	<b>-</b>	<b>-</b>	<b>-</b>	<b>-</b>	<b>-</b>	<b>-</b>	<b>-</b>	<b>-</b>	<b>-</b>	<b>-</b>	<b>(0)</b>

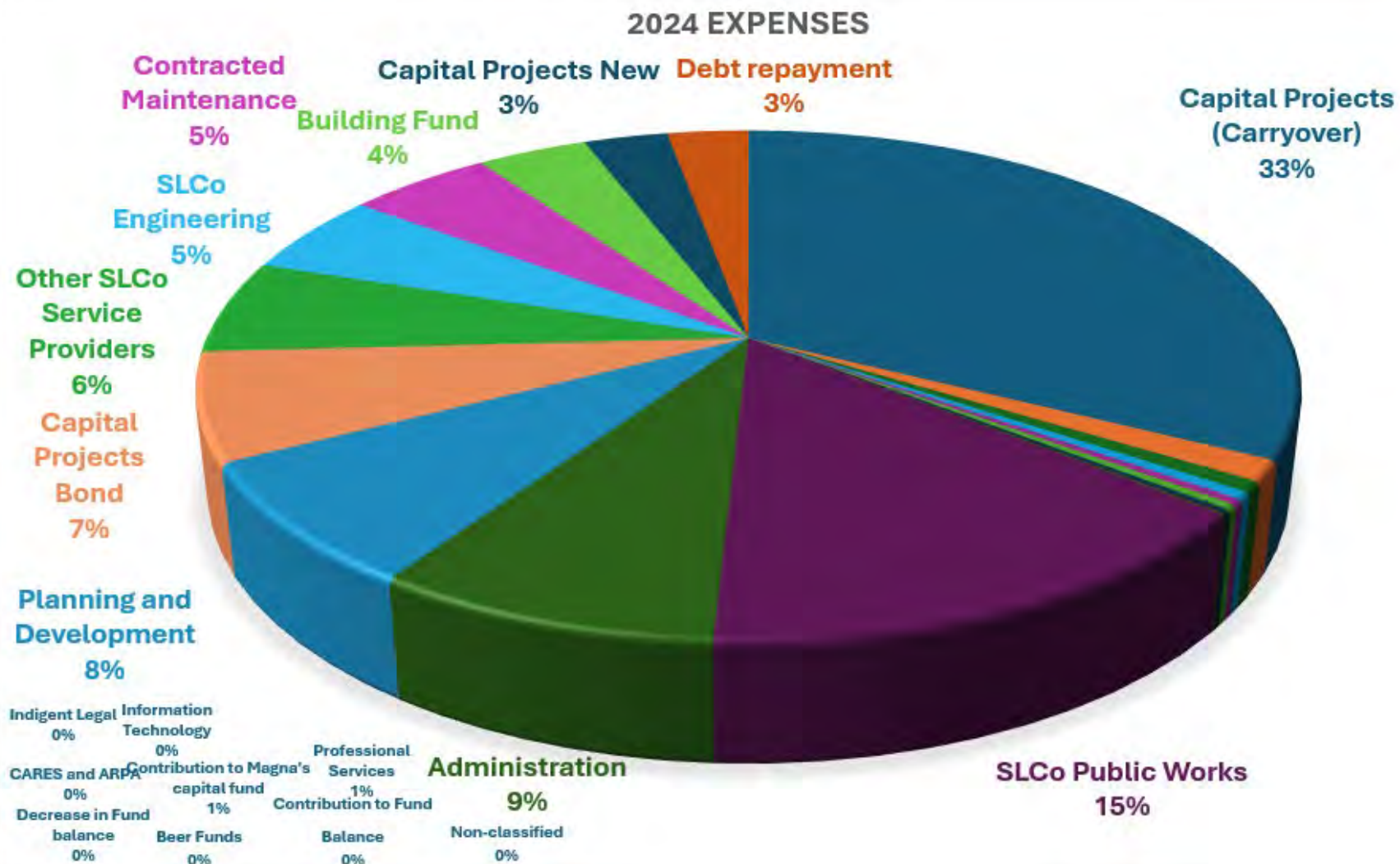


# 2024 Budgeted Revenues





# 2024 Budgeted Expenses



# 2024 Capital Improvements Process

---

## What are capital projects?

High-cost and large-scale physical assets which are purchased or constructed in order to improve, replace, or provide a new public facility.

**Note:** The Capital Improvements Budget only supports engineering projects. Other projects (i.e. Parks & Rec) can be requested during this process but are funded differently.

## How are they funded?

The MSD sets aside annual funds for capital improvement projects. These funds are allocated to each community according to project needs. Final allocations are decided by the MSD Board of Trustees.

# Process + Timeline

This process was utilized for Fiscal Year 2024.

MARCH	APRIL	MAY	JUNE	JULY
Submit projects to Smartsheet Form for consideration. (March 30 <sup>th</sup> )				
	Engineering assesses submissions and recommends top projects.			
		Engineering shares proposed projects with interdisciplinary staff for feedback.*		
			Town/County/City Council reviews projects and makes final project request list.	
				MSD Board votes on all projects.

Submitted project review criteria:

1. Property damage reduction
2. Masterplan system completion
3. Reduction of hazard or improved safety
4. Reduction of maintenance costs
5. Overall project cost
6. Money available from other sources
7. Consistency with General Plan
8. Recreational improvement
9. Water quality improvement
10. Municipal collaboration opportunities
11. Ability to meet engineering standards
12. Public Works Operations overlay schedule

# 2024 Capital Improvements Projects

---

## Magna

- **Western Drive Sidewalk Project** – Installation of sidewalk on Western Drive between 8400 W. and Breeze Drive is planned for construction in summer/fall 2024.
- **Magna Main Reconstruct** – Reconstruction of the travel lanes on Magna Main (2700 S) between 8400 W. and 8850 W. is planned for construction in the summer 2024.
- **3100 S Storm Drain** – Upgrades to the 3100 So. storm drainage systems are currently underway between 8400 W. and Breeze Drive on 3100 So. Final asphalt completion is planned for spring 2024.
- **8000 W SR-201 Turn Lane** – Some minor road widening to extend the turn lane on 8000 W. to SR-201 is planned for construction in the spring 2024.
- **2820 S Sidewalk** – Construction of a sidewalk between 7750 W. and 7440 W. is planned for spring 2024.
- **Magna Traffic Calming** – Installation of traffic calming devices at various locations in Magna is planned for spring 2024.

## Kearns

- **4700 South Reconstruction Project** – Finish minor items from 4000 W. to 5400 W. Reconstruct and widen the roadway from 5400 W. to 5600 W. This segment of roadway crosses a railroad track and is awaiting approval from the railroad, but the work has been advertised and bids are expected back in April. If railroad permits go through as expected, work will begin in early summer.
- **Intersection of 6200 So. and Misty Way** – Plans are being finalized to re-construct the south end of Misty Way where it meets 6200 So. The plans include demolition and reconstruction of the intersection to remove a dip where vehicles often bottom out or scrape on the pavement. Access between Misty Way and 6200 So. is expected to be interrupted during construction. Construction is expected to start in early summer 2024.
- **Construction of raised crosswalks at the intersections of Northwest Avenue and 5615 So. and at Cooper City Drive with Borax Avenue (two intersections)** – These intersections will be re-constructed to include raised crosswalks and new accessible ramps at the corners. Access through these intersections will be interrupted during construction. Construction is expected to start between the summer and fall of this year.
- **6200 So. Overlay** – The asphalt on 6200 So. will be overlaid from 4000 W. to 5600 W. Part of this work includes replacing a section of drainage pipe between 4390 W. and 4520 W. The overlay will create a new durable surface for vehicles to travel on and extend the life of the road.
- **4015 W. Bridge Replacement**—A bridge over the Utah and Salt Lake Canal will be replaced on 4015 W. This will likely occur late fall-winter 2024 through early 2025 but may be delayed until fall-winter 2025 through early 2026 if canal permits and property impacts slow down the process. Due to canal requirements, the work is required to be completed between October and April.



# 2024 Capital Improvements Projects

---

## Brighton

**Improvements to the Nielson Avenue Bridge** in the Silver Fork area are planned for construction in 2024 to address abutment scour and update the guardrail.

## White City

**Sego Lily Drive Improvement** - Construction will kick off in early spring (weather permitting) and includes curb, gutter, and sidewalk installation. Roadway reconstruction will also take place. It is anticipated that construction will be completed in late fall 2024. The Project will add sidewalks, accommodate Safe Routes to School, improve ADA accessibility, add traffic calming measures between 700 East and 1300 East.

## Emigration Canyon

**Slope stabilization work** on the “Red Wall” (Approx. 5652 Emigration Canyon) and “Fin Wall” (approx. 5167 Emigration Canyon) on Emigration Canyon Road is planned for construction beginning April 15.

## Copperton

**New Storm Drain** - Construction is planned on Park Street, Apex Road, and Copperton Circle in 2024. New storm drains and associated inlets will be installed to update the conveyance system in the area.

## Unincorporated Salt Lake County

**10000 South Construction** has started on 10000 South just west of 2700 East. The project will include re-construction of the roadway including grading and paving as well as new curb and gutter and sidewalk on the north side of that road. One driveway currently connects to this segment of roadway and access will be interrupted by construction. Access to Altavilla Drive will remain open during construction but there may be short disruptions in access.

# Bond Projects

## 2022 Bond Summary

Area	Description	Total Issuance	Spent through Dec 31, 2023	Reimbursed to MSD from Bond Proceeds	Proceeds Remaining
White City	Sego Lily Drive Road Improvement	\$ 2,332,000	\$ 457,310.54	\$ 457,310.54	\$ 1,874,689.46
Magna	Cyprus Master Storm Drain Phase 2; 9040 West Storm Drain	\$ 2,223,000	\$ 2,223,000.00	\$ 2,223,000.00	\$ -
Kearns	4700 S Improvement Project	\$ 9,168,435	\$ 6,490,238.61	\$ 6,490,238.61	\$ 2,678,196.39
Emigration Canyon	Canyon Stabilization Project	\$ 2,201,000	\$ 178,378.68	\$ 178,378.68	\$ 2,022,621.32
Unincorporated	Lower Millcreek Canyon Road Overlay	\$ 1,762,446	\$ 1,762,446.00	\$ 1,762,446.00	\$ -
Unincorporated	Upper Millcreek Canyon	\$ 949,554	\$ -	\$ -	\$ 949,554.00
Copperton	Stormwater, Road & Maintenance Projects	\$ 700,000	\$ 49,107.97	\$ 49,107.97	\$ 650,892.03
Brighton	Infrastructure & Maintenance Projects	\$ 200,000			\$ 200,000.00
Unincorporated	Projects at Board Discretion (Upper Millcreek Canyon Road Overlay)	\$ 416,065			\$ 416,065.00
	Issuance Costs	\$ 47,500			\$ 47,500.00
<b>Totals</b>		<b>\$ 20,000,000</b>	<b>\$ 11,160,481.80</b>	<b>\$11,160,481.80</b>	<b>\$ 8,839,518.20</b>



# Miles of Roads Area Paved

	Emigration							
	Town of Brighton	Copperton Metro Township	Canyon Metro Township	Kearns Metro Township	Magna Metro Township	White City Metro Township	County Unincorporated Area	TOTAL
<b>Total Miles</b>	1.53	2.80	13.26	94.34	81.79	18.15	77.61	289.48
<b>Paved Area Sq. Ft.</b>	113,615	382,928	1,758,739	16,031,035	13,303,623	2,873,957	11,339,735	45,803,632.69
<b>Unpaved Area Sq. Ft.</b>			22,674.96					22,674.96





G R E A T E R   S A L T   L A K E

# Municipal Services District



Tree Damage at Salt Lake County Building



## Emergency Management Update



# Emergency Response Planning

---

## Overview

- On Nov 13, 2019, the MSD Board of Trustees authorized the General Manager of the MSD to sign a municipal emergency management service and reimbursement agreement with the Unified Fire Authority (UFA). As a result, two emergency management specialists were hired to provide weekly planning and training services



G R E A T E R   S A L T   L A K E

**Municipal Services**  
**District**

## Emergency Plan Development

- MSD
  - Emergency Operations Plan (EOP)
  - Continuity of Operations Plan (COOP)
- Members
  - Adoption of the MSD EOP
  - Community Wildfire Protection Plan
  - COOP
  - Adoption of County Hazard Mitigation Plan
  - Emergency Response Plan (Brighton)
  - Emergency Communications Plan (Brighton, Kearns, White City)
- Comprehensive Emergency Management Plan (CEMP) development

# Emergency Response Planning

---

## Training/Exercising

- MSD
  - SLCo Local CEMP Tabletop
  - COOP Training
  - FEMA L102, Science of Disaster
  - FEMA NIMS IS & Professional Development Courses
  - CPR Training



G R E A T E R   S A L T   L A K E

**Municipal Services  
District**

## Training/Exercising

- MSD (continued)
  - WebEOC
  - Emergency Coordination Center (ECC) set up training
  - ATC-20, Post-earthquake Safety Evaluation of Buildings
  - WebEOC table top with SLCo EM
- Members
  - FEMA G-402, ICS Overview for Executives & Senior Officials **May 2024 Opportunity**
  - Joint training with MSD staff

# Emergency Response Planning

---

## Recurring Meetings

- Salt Lake Valley Emergency Manager Group Meeting—Monthly meeting provides updates on valley-wide emergency management issues, trainings, events, exercises, etc.
- Weekly Emergency Management Brief—Brief call provides any urgent updates as necessary between the monthly group meetings.
- Ongoing updates as needed, such as flooding, bad weather, etc.



G R E A T E R   S A L T   L A K E

**Municipal Services**  
**District**

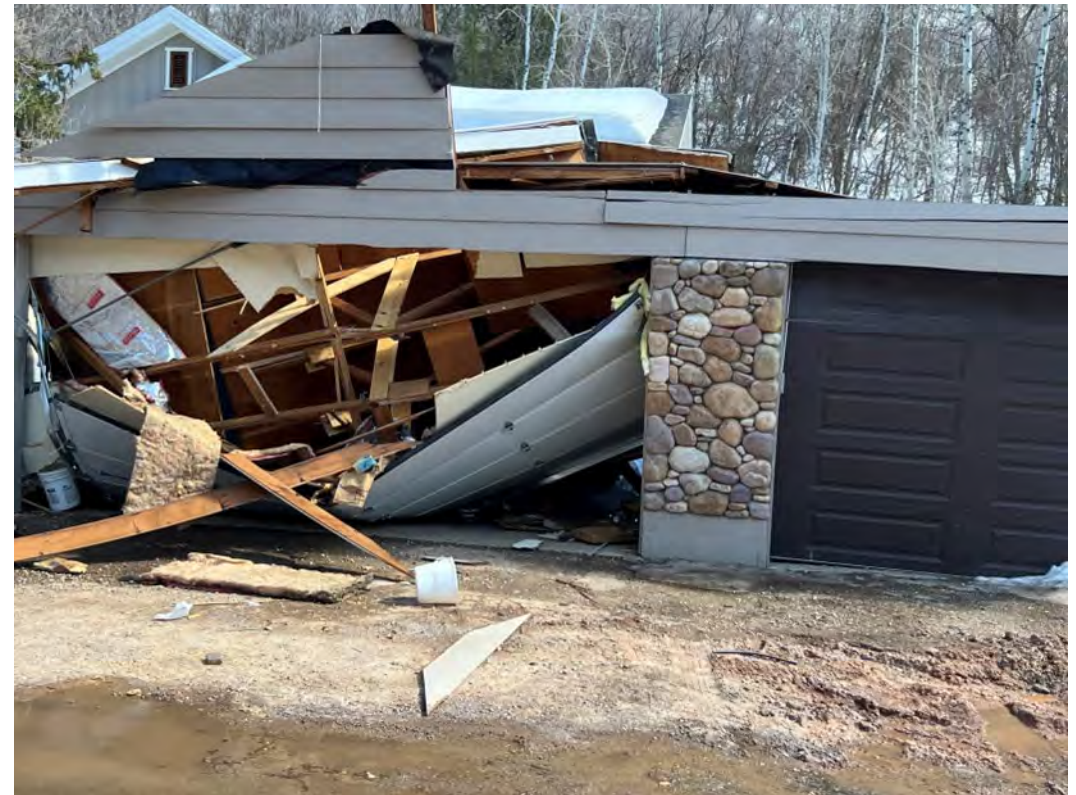


# Emergency Response Planning

## Emergency Manager Designation

- HB96 in 2021 requires that each jurisdiction designate an emergency manager.

Jurisdiction	Assigned Emergency Planner	Designated Emergency Manager*
Copperton	Jim Woodward	Mayor Clayton
White City	Jim Woodward	Rori Andreason
Emigration Canyon	Jim Woodward	Mayor Smolka
Kearns	Brad Jewett	Mayor Bush
Magna	Jim Woodward	Councilmember Pierce
Unincorporated SLCo	Jim Woodward	Mayor Designee
MSD	Jim Woodward	N/A
Town of Brighton	Jim Woodward	Jane Martain
<b>Total Monthly Cost</b>		





# Emergency Response Planning

---

## 2023 Spring Runoff

- Sandbags available for residents. Locations for sand and bags found at: <https://slcoem.org/sandbag-locations/>
- Municipalities can order sand and bags for community preparation events.
- Information from SLCo Emergency Management on flood monitoring and preparations can be found at: <https://slcoem.org/emergency/flooding-spring-runoff/>
  - Volunteers can register to serve, or volunteers can be requested.
- Maps to identify property in relation to the floodplain.
- If you see debris blocking a river, creek, stream or canal, contact SLCo Flood Control at 385-468-6600; if flooding on a roadway or storm drain, call 385-468-6101.



# Emergency Resource Coordination Chart

## Personnel Assignments

## Agency

## Key Tasks

### SLCo ECC

MSD General Manager or Designee (Ops Room Municipal Coordination area of ECC)

Salt Lake County  
Emergency Coordination  
Center (ECC)

### SLCo ECC

Accesses resources upon request of MSD when MSD capacity exceeded.

### MSD Office

- MSD Personnel as assigned by General Manager

Other incorporated cities  
in SLCo

MSD  
Emergency Coordination  
Center

Other incorporated cities  
in SLCo

### MSD Office

Receives reports and requests from members and deploys MSD services or elevates requests to SLCo ECC

### Local Policy Group

- Mayor
- UPD
- UFA
- Jurisdiction Emergency Manager(s)

Brighton

Copperton

Emigration

Kearns

Magna

White City

### Local Policy Group

- Initiates reports and resource requests for municipal services that are sent to MSD ECC
- Requests to UPD and UFA are made through existing channels.



# MSD Drone & GIS Services

- **Tracking Grading and Development Project Progress**
- **Building Inspections** – high-resolution images of building and 3D models
- **GIS Products** – elevation, hillshade, 3D meshes, contour lines
- **Marketing** - High-quality drone images can be used for print or digital marketing and branded web applications.
- **Site Scan Access** to process and display drone imagery enables viewers utilize tools such as: cut/fill, 3D measurements, volumetric measurements, imagery comparison, and elevation profiles.

Fill out the form on our website to receive a quote.



<https://msd-drone-operations-gslmsd.hub.arcgis.com>



# Long Range Planning in Unincorporated Areas: 2024 Outlook

## Continued Work on Title 19, Zoning:

- Ensure compliance with State Code
- Enhance consistency with vision of the adopted General Plans
- Increase usability for residents and staff
- Protect unique character of unincorporated neighborhoods
- Environmental Quality




**Shape the future of our waterways!**

Join the movement to enhance and protect the waterways flowing from the Oquirrh Mountains. Your voice is essential in developing a sustainable future for our creeks and streams, ensuring they remain vibrant and accessible for generations to come.


Scan the QR Code to:

- Learn more about the H2Oquirrh: Southwest Waterways Visioning Plan
- Share your thoughts and insights through our brief survey
- Discover how you can contribute to the conservation and improvement of our waterways

Learn More



[SLCO.TO/H2OQUIRRH](https://slco.to/h2oquirrh)



## Continued Implementation of Moderate Income Housing Plan:

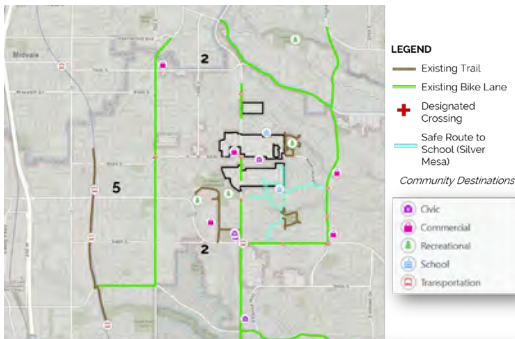
- (B) Demonstrate investment in the rehabilitation or expansion of infrastructure that facilitates the construction of Moderate Income Housing.
- (E) Create or allow for, and reduce regulations related to, internal or detached accessory dwelling units in residential zones.
- (F) Zone or rezone for higher density or moderate income residential development in commercial or mixed-use zones near major transit investment corridors, commercial centers, or employment centers.
- (L) Apply for or partner with an entity that applies for state or federal funds or tax incentives to promote the construction of moderate income housing.
- (V) Create or allow for, and reduce regulations related to, multifamily residential dwellings compatible in scale and form with detached single-family residential dwellings and located in walkable communities within residential or mixed-use zones.



# MSD Geographic Information Systems (GIS)

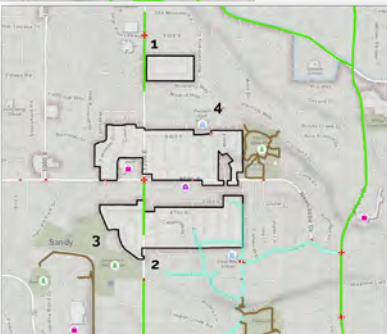
## Did You Know?

GIS helps keep the MSD-world spinning.



### Barriers to Multi-Modal Transportation:

1. Extreme distances between crosswalks, especially on 1300 E (between 1/2 and 1-mile distances).
2. Unexpected gaps in the bike lane network.
3. Lack of trail connections between where people live and where they want to go.
4. No identified Safe Route for Peruvian Park students.
5. Lack of East / West Connection to Transit Stops.



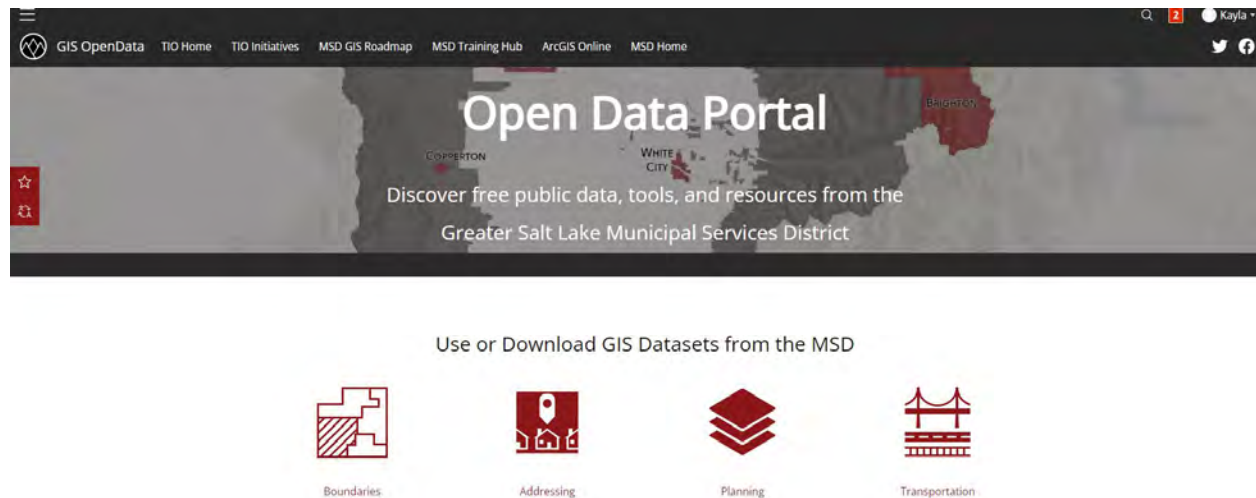
## Example Applications:

- Mapping business licenses to show commercial clusters.
- Tracking accessory dwelling unit (ADU) permits for future housing reporting.
- Determining the applicable zoning on a property.
- Identifying flood-plain boundaries and preparing emergency response.
- Evaluating and mapping potential transportation routes.
- Understanding the land uses and character of a neighborhood.
- Mapping geologic hazards.
- Assigning new addresses and street names.
- Visualizing future development based on land use codes.

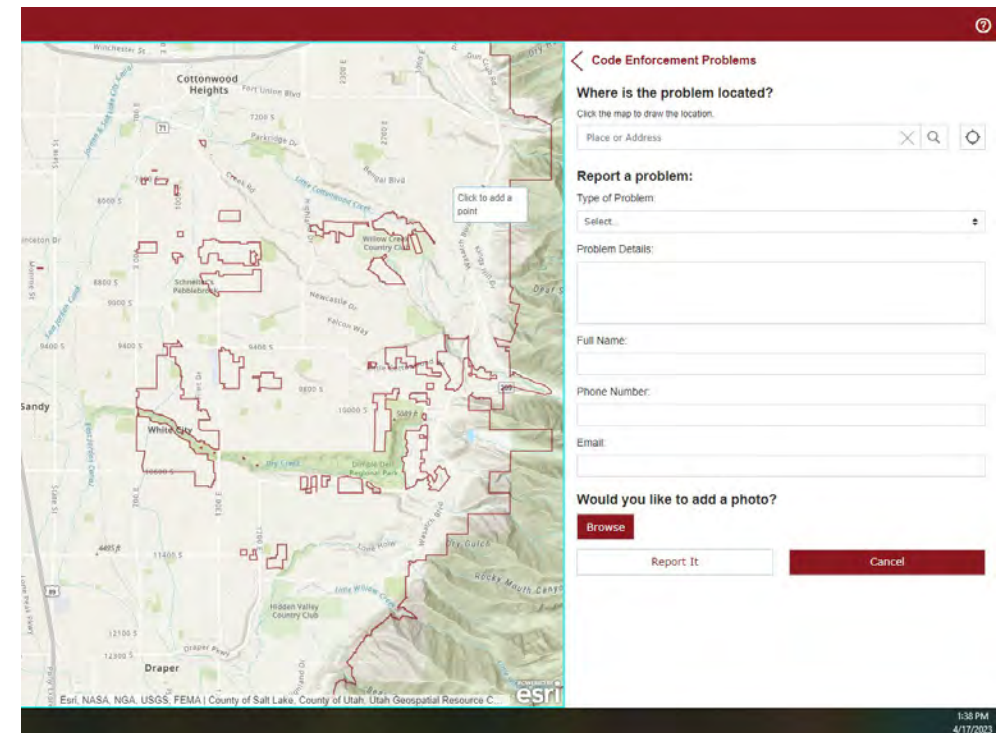
# MSD GIS: for the public

## Did You Know?

The public can explore MSD GIS data and dashboards.



Visit <https://gis-opendata-gslmsd.hub.arcgis.com> to explore existing data and dashboards.



Use our GIS tools to report issues in your community by visiting <https://bit.ly/msd-cpr>.





## Postcards and Educational Brochures

## COMMUNITY OUTREACH and COMMUNICATIONS



## Community Events

## Social Media

<https://www.facebook.com/GSLMSD/>

<https://twitter.com/GreaterSLMSD>



## Community Surveys



## Monthly Online Newsletters



## Printed Newsletter to 28,000 homes






https://msd.utah.gov



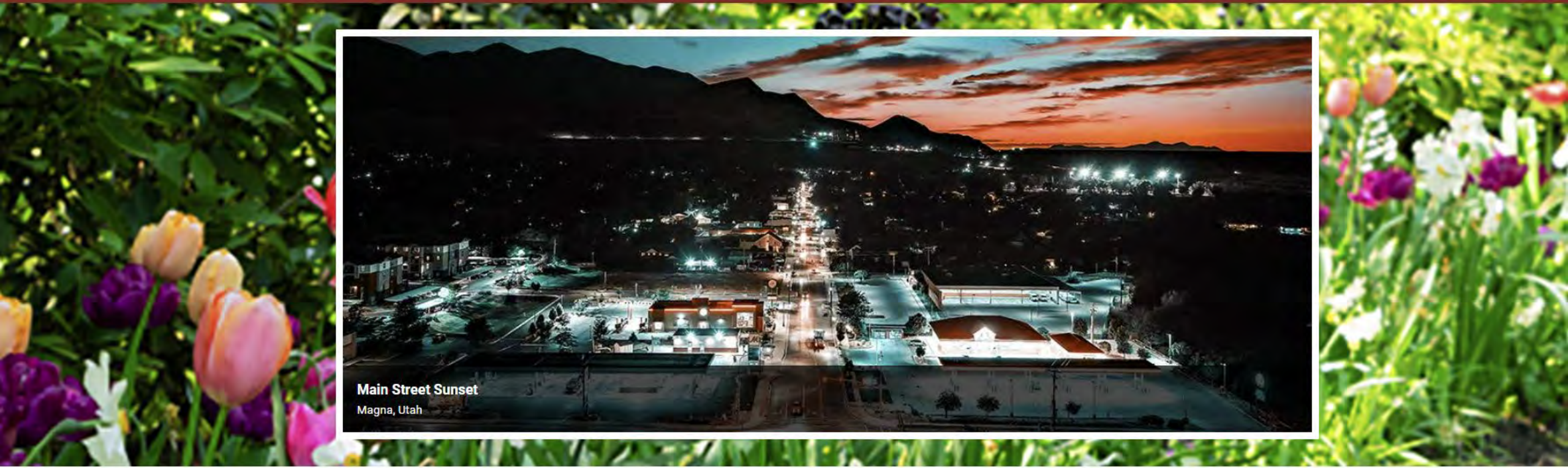
GREATER SALT LAKE

**Municipal Services  
District**





- About Us
- Communities
- Departments
- Services
- How Do I...
- Application Portal Login



Main Street Sunset  
Magna, Utah



Agendas & Minutes



Employment



Notify Me®



Report a Problem



Contact Us



Sign Up for Newsletter





Website: [msd.utah.gov](http://msd.utah.gov)