



HISTORY AND OVERVIEW

December 10, 2020

G R E A T E R S A L T L A K E

Municipal Services

District

HISTORY

Greater Salt Lake Municipal Services District (MSD)

Unincorporated-area problems

- Shrinking tax base from incorporations and annexations
- Community identity suffering through loss of land area
- No community border protection
- No local control

“Community Preservation” proposal

- Conceptualized by County Mayor Ben McAdams
- Consultation and refinement with elected officials and community leaders
- Legislation authorizing metro townships, the MSD and an election

HISTORY, Page 2

Greater Salt Lake Municipal Services District (MSD)

County council created the MSD on
September 15, 2015

Independent “local district” under Utah Law

Purpose

The MSD provides municipal services to
its member communities

- To unincorporated areas in 2015-16
- To municipalities and the unincorporated areas starting in January 2017
- Includes all municipal services formerly provided by Salt Lake County
 - This did not affect county-wide services

The MSD does not provide police, fire or
sanitation services

HISTORY, Page 3

Greater Salt Lake Municipal Services District (MSD)

November 2015 General Election

Voters in Copperton, Emigration Canyon, Kearns, Magna, Millcreek and White City voted whether to:

- Become metro townships served by the MSD, or
- Become cities

Voters in unincorporated islands voted whether to:

- Annex to adjacent city, or
- Remain unincorporated

Voter information and engagement

- Salt Lake County council and mayor held 30+ town halls and public hearings in 2015
- Information mailed to every voter

2015 Election Result

- Millcreek voters chose city
 - Millcreek withdrew from the MSD in July 2017
- Copperton, Emigration Canyon, Kearns, Magna and White City voters chose metro township
- Most unincorporated island voters rejected annexation

The Town of Brighton incorporated in January 2020 as an MSD member

HISTORY, Page 4

Greater Salt Lake Municipal Services District (MSD)

MSD is governed by a Board of Trustees

- The county council served as the board in 2015-16
- 5 mayors and 2 council members now comprise the board
- Board voting and quorum determination are weighted by population
- Board sets policy and adopts the budget
- General manager reports to the board and directs district operations

The MSD initially contracted with the county for all municipal services

- MSD took over Planning and Development, Finances and Human Resources in 2019
- MSD now contracts with the county and a nonprofit for other services

METRO TOWNSHIPS

- A new type of Utah municipality
 - Cities, towns and metro townships
 - Same responsibilities as other municipalities

5-member councils elected by voters

- Each council then selects a mayor from its members
- All Utah municipal elections are held during odd-numbered years (Exception: the first metro township election was in 2016)
- Initial councils and mayors took office in January 2017
- Kearns and Magna councils are elected from geographic districts
- Copperton, Emigration Canyon and White City councils are elected at-large



G R E A T E R S A L T L A K E

**Municipal Services
District**

23 Municipalities in Salt Lake County

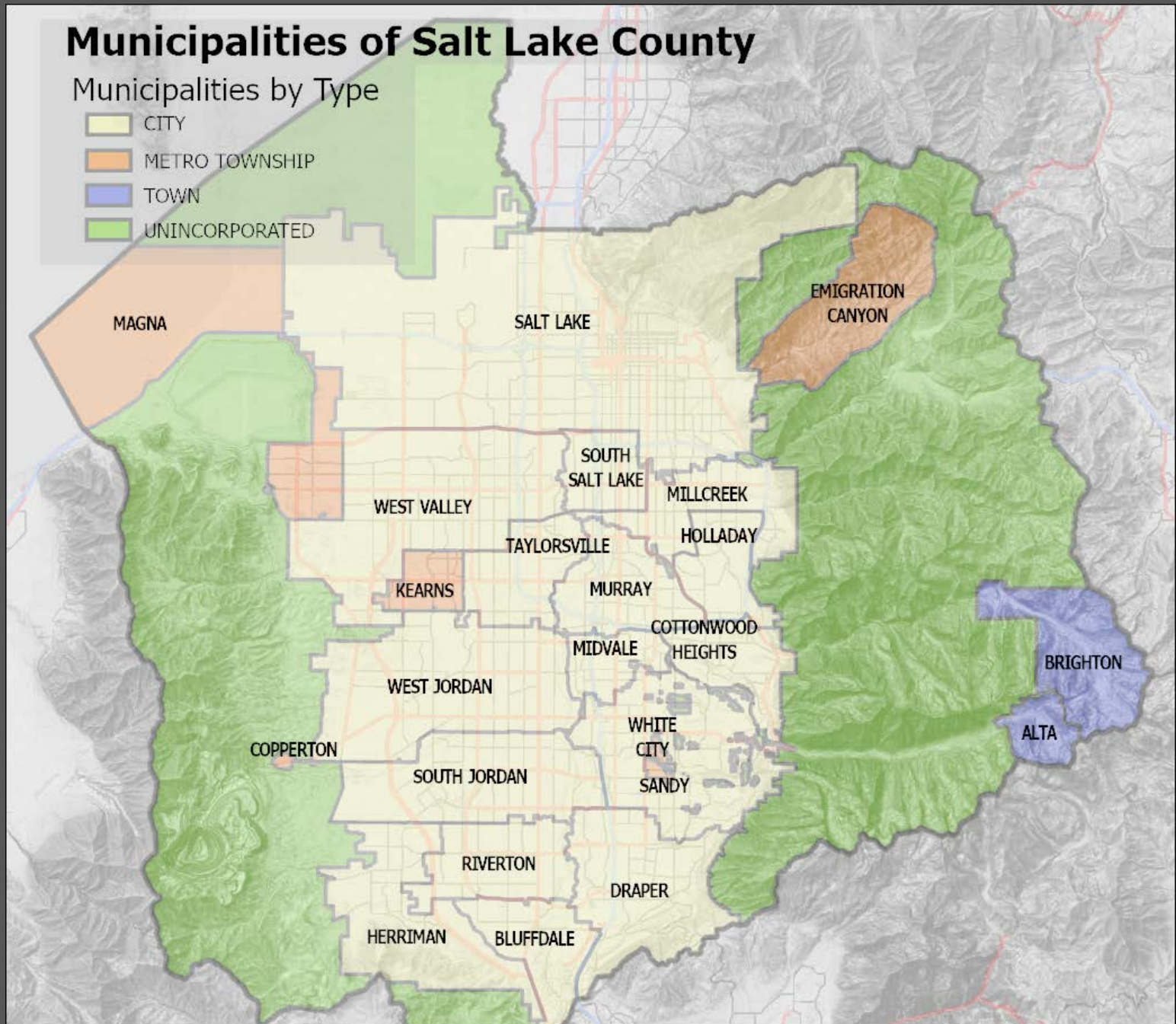
16 Cities

5 Metro
Townships

2 Towns

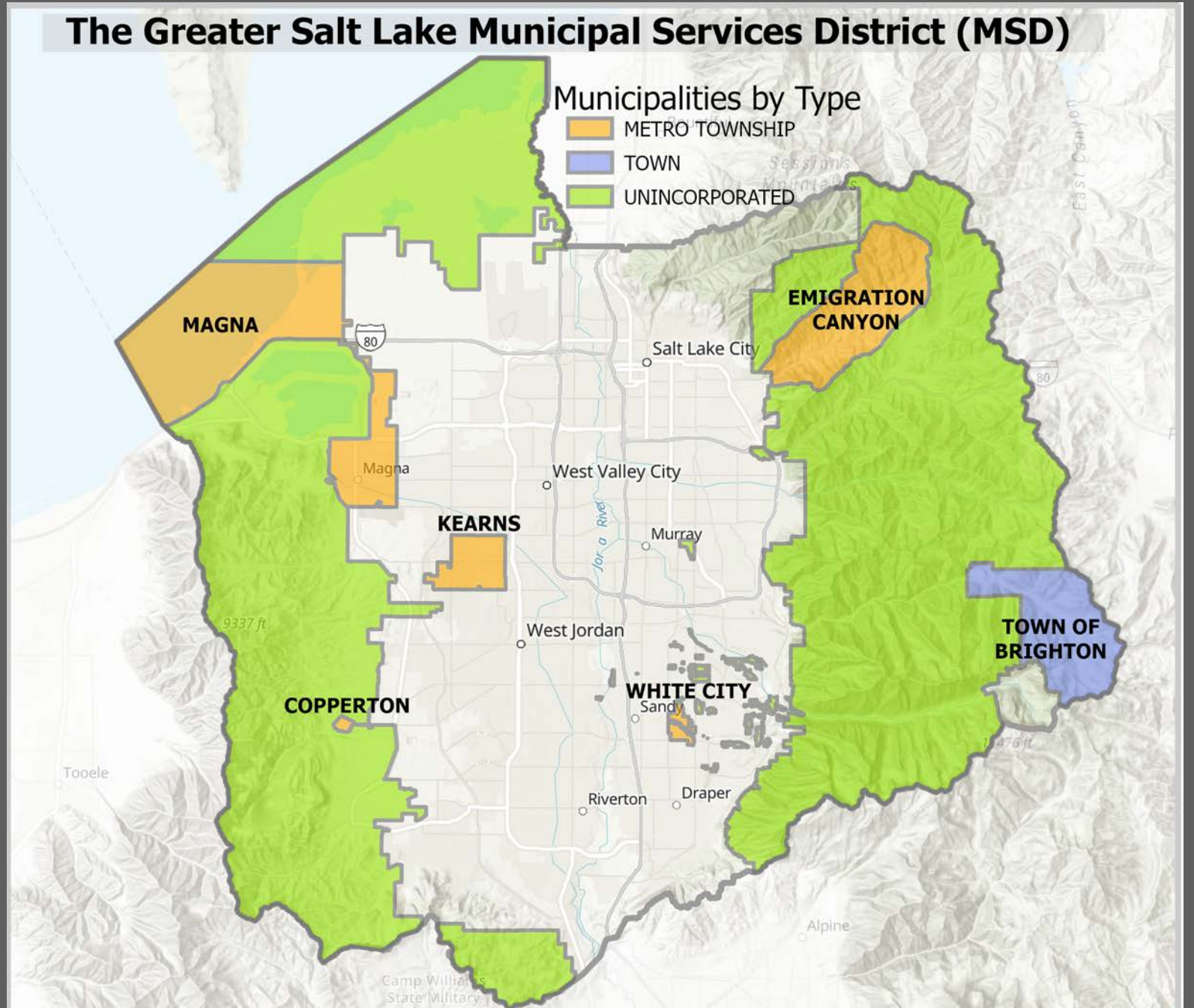


GREATER SALT LAKE
**Municipal Services
District**



MSD Municipalities and Unincorporated Areas

The Greater Salt Lake Municipal Services District (MSD)



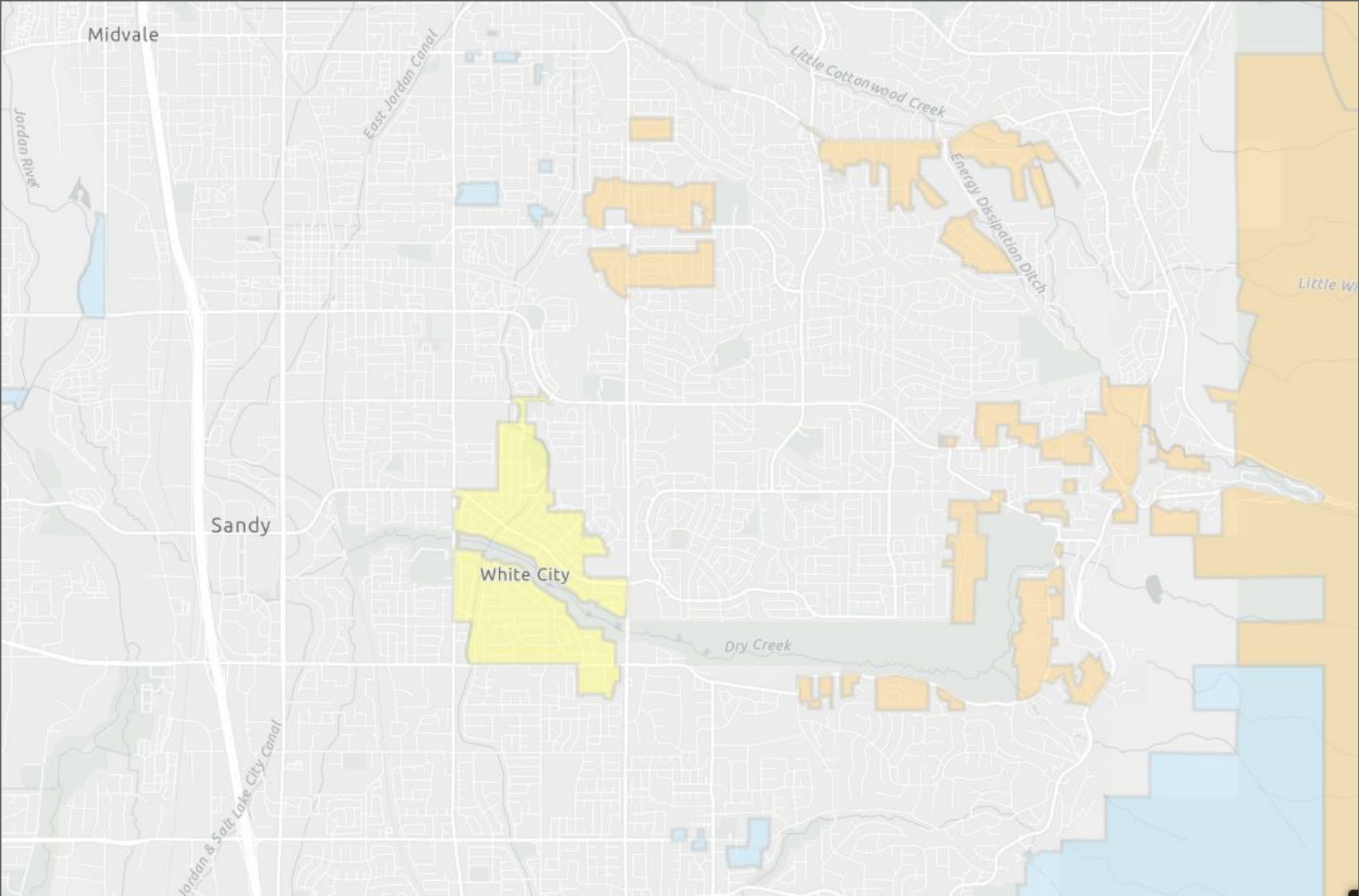
G R E A T E R S A L T L A K E
**Municipal Services
District**

Southeast Area:

White City Metro
Township

Unincorporated
Areas With
Community Councils

Unincorporated
Areas Without
Councils

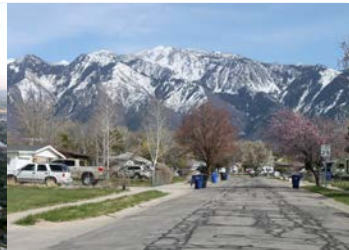


GREATER SALT LAKE
**Municipal Services
District**

MSD Population 2019: 80,905*

Member Entities:

Town of Brighton	Copperton Metro Township	Emigration Canyon Metro Township	Kearns Metro Township	Magna Metro Township	County Unincorporated Area	White City Metro Township
272	799	1,601	34,727	27,179	10,815	5,512



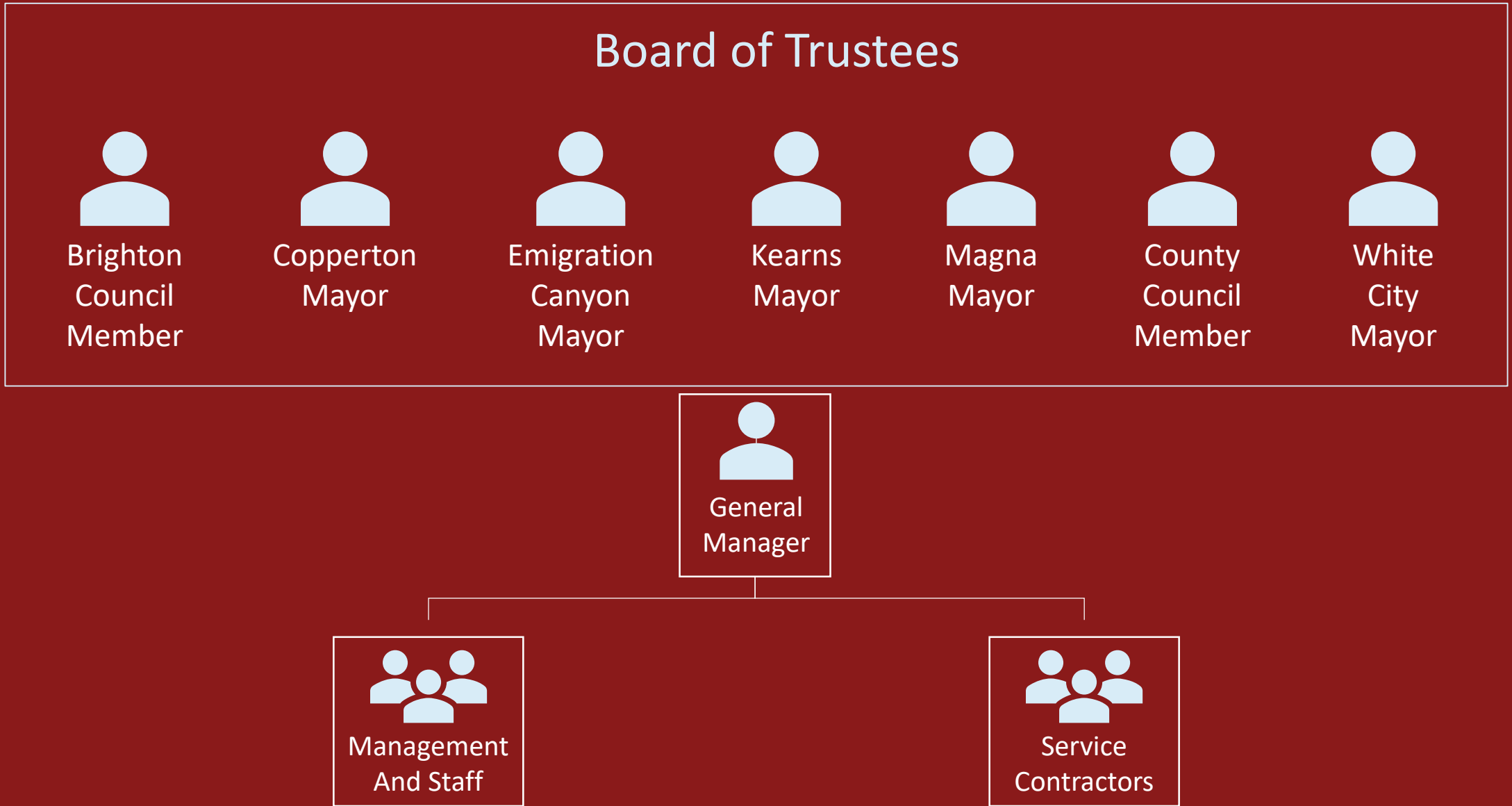
Unincorporated Area Population 2019: 10,815*

Community Councils:

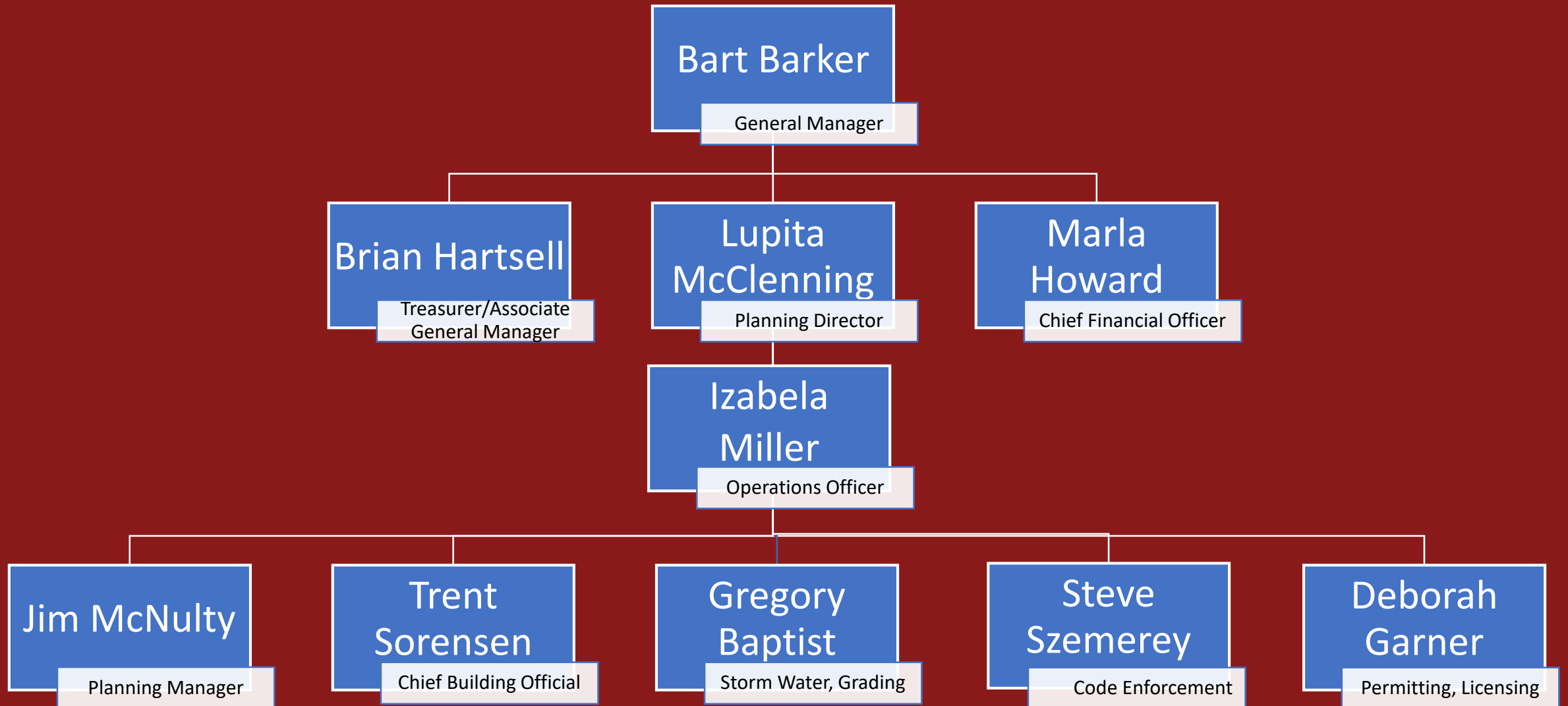
Big Cottonwood Community Council	Granite Community Council	Sandy Hills Community Council	Willow Canyon Community Council	Willow Creek Community Council
				

*Kem C. Gardner Policy Institute, September 2019

MSD Governance



MSD Organizational Structure



MSD Municipal Services

Provided Directly by the MSD:

- Administration
- Planning and Development Services
- Fiscal Management
- Human Resources

Contracted to Salt Lake County:

- Public Works Operations
- Engineering
- Parks
- Animal Services
- Justice Court
- Municipal Prosecution

Contracted to the Salt Lake Legal Defender Association:

- Indigent Legal Defense



G R E A T E R S A L T L A K E
**Municipal Services
District**

2021 MSD Budget

All Funds

	MSD/ General Fund	Capital Impr	Brighton	Copperton	Copperton Cemetery	Emigration Canyon	Kearns	Magna	Pleasant Green (Magna) Cemetery	White City	Unincorporated	Total
REVENUES												
Sales taxes			185,000	108,836		223,220	4,482,861	3,910,737	-	646,810	4,644,184	14,201,648
Cable TV Franchise Fees				-							200,000	200,000
Class B&C Road Funds and Road Tax			6,000	33,112		90,140	1,192,564	946,056		201,941	4,875,058	7,344,871
State Liquor				-		800	17,300	17,000		2,700		37,800
Planning and Zoning Fees			9,100	9,140		8,400	267,000	940,000	-	-	177,400	1,411,040
Transportation Sales Tax (SB136)			19,158	10,097		20,556	398,604	343,226		58,802	320,637	1,171,080
Fines and Forfeitures			-	3,558		7,419	154,125	122,444	-	26,100	16,600	330,246
Charges for Services			6,000	439		1,600	120,000	550,000	20,000	113,592	16,600	828,231
Interest and other	202,100		-	3,200	5,400	4,400	10,000	12,000	-	-	80,000	317,100
Grants		4,519,846						50,000				4,569,846
Grants paid directly to contractors		11,875,040										11,875,040
Bond proceeds	12,076,000											12,076,000
Contributions from Fund Balance (Encumbered)		2,407,162										2,407,162
Contributions from Fund Balance	4,387,810											4,387,810
	7,145,312	18,802,048	225,258	168,382	5,400	356,535	6,642,454	6,891,463	20,000	1,049,945	10,330,479	61,157,874
EXPENSES												
Administration	1,347,905		293,000	160,000	2,000	219,800	436,200	594,755	10,000	277,757	459,000	3,800,417
Animal Services	854,314											854,314
DA Prosecution	279,647											279,647
Indigent Legal	162,600											162,600
Justice Courts	1,100,000											1,100,000
Parks Maintenance	1,258,000											1,258,000
Public Works	13,119,507											13,119,507
Engineering	2,423,333											2,423,333
Professional Services	298,000											298,000
Information Technology	188,500											188,500
Planning and Development	4,457,121											4,457,121
Non-classified	260,100											260,100
Debt repayment	-											-
Beer Funds						800	17,300	17,000		2,700		37,800
Capital Projects		25,338,118										25,338,118
Capital Projects (Encumbered)		2,407,162										2,407,162
Contribution to Fund Balance	-	4,519,846			3,400				10,000			4,533,246
	25,749,027	32,265,126	293,000	160,000	5,400	220,600	453,500	611,755	20,000	280,457	459,000	60,517,865
TRANSFERS												
Transfers in	25,006,957	13,463,078	275,450	160,000		220,600	453,500	611,755	-	280,457	459,000	40,930,797
Transfers out	(15,923,840)		(207,708)	(162,504)		(344,375)	(6,147,156)	(6,869,932)		(1,039,521)	(10,235,761)	(40,930,797)
Transfers to Capital Projects		-										-
Transfer to Capital fund - Council Designated		-										-
	9,083,117	13,463,078	67,742	(2,504)	-	(123,775)	(5,693,656)	(6,258,177)	-	(759,064)	(9,776,761)	-

